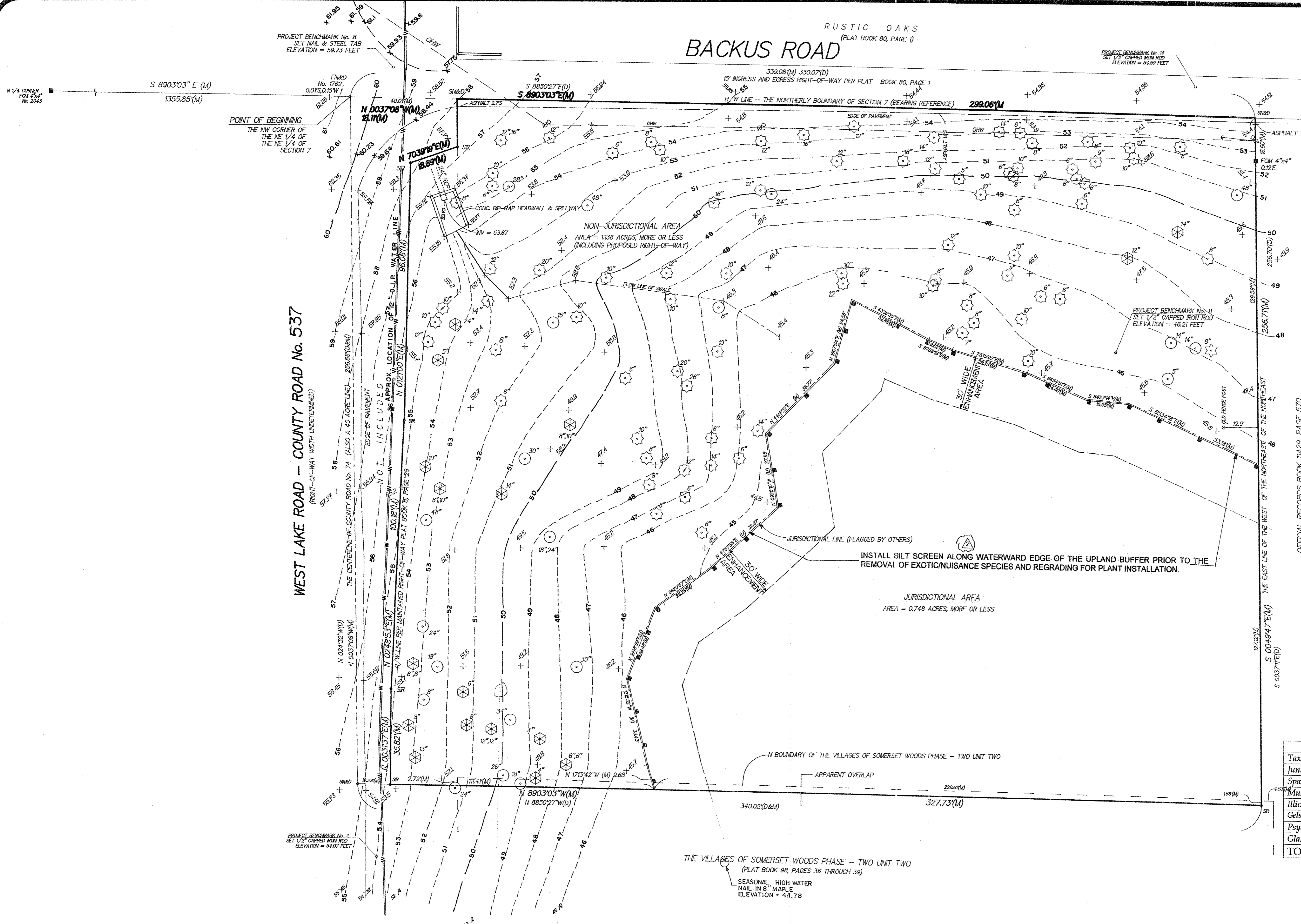
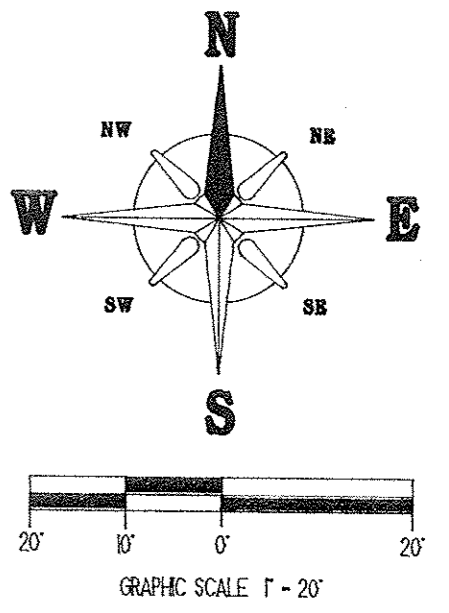


RUSTIC OAKS  
(PLAT BOOK 80, PAGE 1)  
**BACKUS ROAD**



OFFICIAL RECORDS BOOK 1423, PAGE 570

**NOTES**

1. A TEMPORARY IRRIGATION SYSTEM WILL BE PROVIDED IN THE UPLAND BUFFER.
2. PLANT MATERIAL INSTALLED IN THE BUFFER WILL BE HAND WATERED UNTIL ESTABLISHMENT HAS OCCURRED.
3. THE REMOVAL OF EXOTIC NUISANCE SPECIES ALONG WITH THE RESTORATION OF THE UPLAND BUFFER AND ON-SITE WETLANDS, AS APPROVED, MUST BE COMPLETED PRIOR TO THE RELEASE OF ANY CERTIFICATE OF OCCUPANCY ASSOCIATED WITH THIS PROJECT.

**NOTE:** MONITORING AND MAINTENANCE OF THE UPLAND BUFFER AND WETLAND ENHANCEMENT AREA WILL BE MONITORING EVENT 6 MONTHS AFTER PLANTING AND AT THE END OF THE 1-YEAR MAINTENANCE AGREEMENT.

**UPLAND BUFFER AREA PLANTING SCHEDULE**

SPECIES	COMMON NAME	O.C.	SIZE	NUMBER
<i>Taxodium Distichum</i>	Bald Cypress	Variable	1.5" 6'	18
<i>Juniperus Silicicola</i>	Eastern Red Cedar	Variable	1.5" 6'	4
<i>Spartina Bakerii</i>	Smooth Cordgrass	3'	BR	250
<i>Muhlenbergia Capillaris</i>	Muhley Grass	3'	BR	250
<i>Illicium Parviflorum</i>	Yellow Anise	3'	1-Gallon	100
<i>Celastrum Sempervirens</i>	Carolina Yellow Jasmine	3'	1-Gallon	50
<i>Psychotria Nervosa</i>	Wild Coffee	3'	1-Gallon	50
<i>Glandularia Tampensis</i>	Tampa Verbena	3'	1-Gallon	50
<b>TOTAL:</b>				<b>770</b>

**WETLAND ENHANCEMENT AREA PLANTING SCHEDULE**

SPECIES	COMMON NAME	O.C.	SIZE	NUMBER
<i>Spartina Bakerii</i>	Smooth Cordgrass	3'	BR	160
<i>Iris Virginica</i>	Blue Flag Iris	3'	BR	160
<i>Canna Flaccida</i>	Golden Canna	3'	BR	260
<i>Pontederia Cordata</i>	Pickerelweed	3'	BR	360
<i>Sagittaria Lancifolia</i>	Arrowhead	3'	BR	360
<b>TOTAL:</b>				<b>1,300</b>

**NOTES:** BR = Bare Root; 1-Gallon is equivalent to root ball size; Planting Centers are 3' for herbaceous

**TREE LEGEND**

- ☆ = BAY
- ⊗ = CAMPHOR
- = OAK
- ⊙ = SPECIES UNKNOWN

**LEGEND AND ABBREVIATIONS:**  
 C = CENTERLINE, FR = FOUND IRON ROD, OS = POWER POLE, TWP = TOWNSHIP, RNG = RANGE,  
 C/S = CONCRETE SLAB, (M) = MEASURED DIMENSION, (D) = DIMENSION PER DEED, INV = INVERT ELEVATION,  
 PCP = PERMANENT CONTROL POINT, A/C = AIR CONDITIONER, SN&D = SET NAIL & DISK No. LB4019,  
 R/W = RIGHT OF WAY, N = NORTH, S = SOUTH, E = EAST, W = WEST, FN&D = FOUND NAIL & DISK,  
 CONC. = CONCRETE, SIR = SET 1/2" IRON ROD No. 4086, C.B. = CHORD BEARING, G = GUY ANCHOR,  
 W/C = WITNESS CORNER, PRM = PERMANENT REFERENCE MONUMENT, LFE = LOWEST FLOOR ELEVATION,  
 X0.00 = EXISTING ELEVATION, LB = LICENSED BUSINESS, OHW = OVERHEAD WIRE, RCP = REINFORCED CONCRETE PIPE  
 ■ = SILT SCREEN PER. F.D.O.T. INDEX No. 102

PROJECT TITLE:  
**NATURE'S WINDOW TOWNHOMES**  
 PREPARED FOR:  
 JOSEPH E. YASSO  
 RE/MAX REALTEC GROUP  
 4175 WOODLAND PARKWAY  
 PALM HARBOR, FL 34685  
 TEL. 789 - 5555

REVISIONS: 10-5-03 PER. PINE LLAS, COUNTY  
 11-13-03 PER. COUNTY

SCALE: 1" = 20'  
 DATE: 9-13-02

DRAWN BY: MRYDER  
 JOB No. 1170-02  
 SHEET No. 2 OF 15 SHEETS

DRAWN: **EXISTING CONDITIONS PLAN**

NOT VALID UNLESS SIGNED AND SEALED BY:  
 DATE: 9/13/02  
 REGISTERED PROFESSIONAL ENGINEER No. 2938 FLA. REG. ARCHITECT No. 4073  
 STATE OF FLORIDA

TELEPHONE (727) 934-5120  
**ALEX J PANIK P.E., P.L.S., P.A.**  
 CONSULTING ENGINEER  
 3922c U.S. HIGHWAY NORTH 19  
 TARPON SPRINGS FLORIDA 34689